

## Control System Upgrade Kit BEAMLOGIX



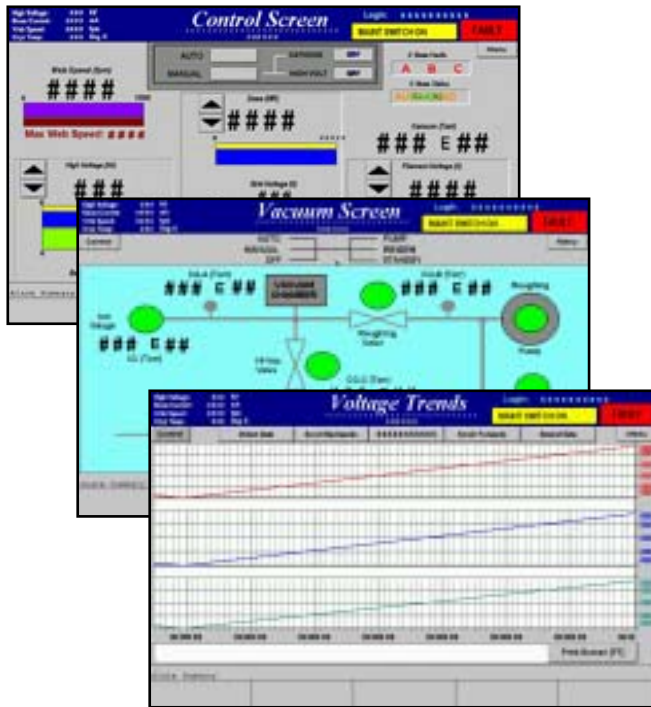
PCT Engineered Systems has responded to our customer's requests and developed the BeamLogix control system upgrade kit for BroadBeam® electron beam processors. The original custom circuit boards are replaced by a PLC-based control system. An enhanced operator interface station is also provided as part of the kit. The new controls and operator screen are mounted in a compact, free-standing enclosure. PCT also provides field service support for re-commissioning your machine and training of your operators and maintenance staff.

### Control Enclosure

The control enclosure is assembled and tested prior to shipment. The controls provided include:

- PLC System including CPU, Power Supply, I/O Modules, and Ethernet Communication Module
- Sub-Rack with Control Boards for:
  - Control Line Transformer
  - HV Servo
  - Filament Control
  - HV Reference and OC
  - Dose Rate
- 15" (380 mm) Operator Interface Screen with Keyboard and Mouse
- Hour Meters for Total Machine Run Time and Filament On Time
- E-Stop Pushbutton
- Key Switch for Resetting Timers
- DC Power Supplies
- Control Relays, Fuses, and Terminal Blocks





## Enhanced Operator Interface Screens

The operator screens provide a detailed view of the machine's operation. Critical information, such as High Voltage, Beam Current, and Fault Status is displayed in the header on all screens. An online help system, including procedure documentation, training videos, and machine schematics is also available. The screens supplied include:

- Main Machine Control
- Auto Conditioning Operation
- Vacuum System Status
- Thermal Condition Monitoring
- Trending of Voltage, Current, Vacuum, and Temperature
- Fault Status

## Benefits

The BeamLogix system is designed to extend the life of your investment in electron beam technology. You will also experience fewer unscheduled outages for troubleshooting the controls. Operation of the machine will benefit from the additional information available on the operator screens. This upgrade can typically be installed during a routine maintenance outage.

## Our Customers Say.....

"Because the upgrades are based on a PLC operating system, we can now troubleshoot and trend problems, which the old embedded controller couldn't do."

For further information and current pricing, please contact us.

**PCT**  
Engineered Systems, LLC

5433 Tremont Ave.  
Davenport, IA 52807  
563.391.8011  
FAX 563.391.8432  
[www.teampct.com](http://www.teampct.com)

**The Solutions Team**

